



SUPREME X-SERIES FRONT BAR

Dodge RAM 1500 DT (2021+)

INSTALLATION MANUAL

SUPREME FRONT BAR FOR RAM 1500 DT (2021+)

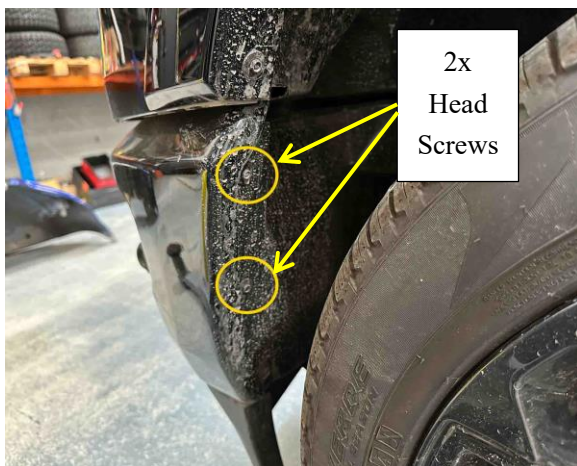
Before Installation

- Please read through the instructions completely for correct and easy installation, following these instructions carefully will help to avoid scratches or other potential damage to your vehicle.
- The figures here may vary slightly with the actual product measurements, however this will not directly affect or cause any issues with the assembly method.

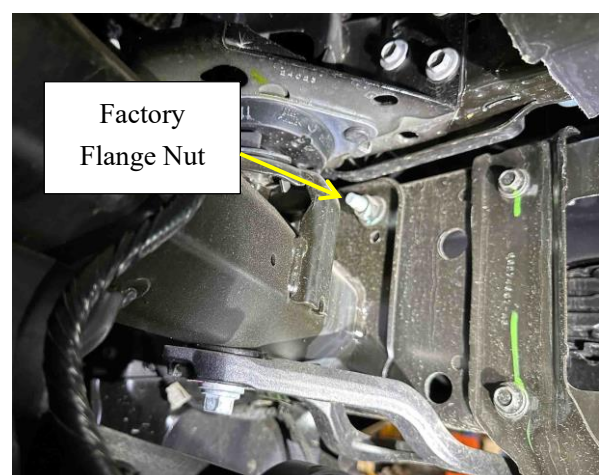
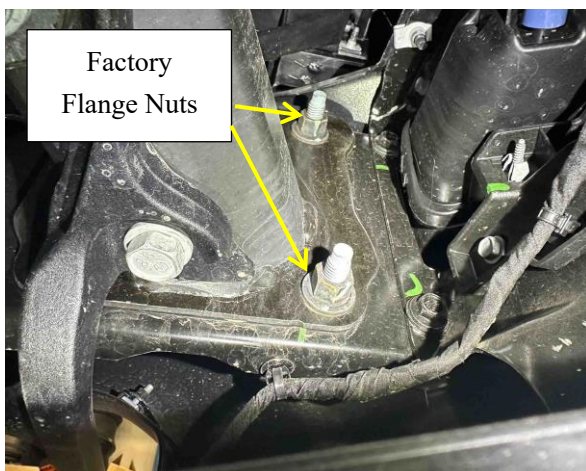
NOTE: Any factory clips or screws you remove need to be kept as it may be used in later steps.

REMOVING THE FRONT FACTORY BUMPER

1. Remove the 2 Head Screws from the side edge of the front factory bumper and also remove the 2 Head Screws from the inner guard to the chassis. Do this for both sides of the vehicle.

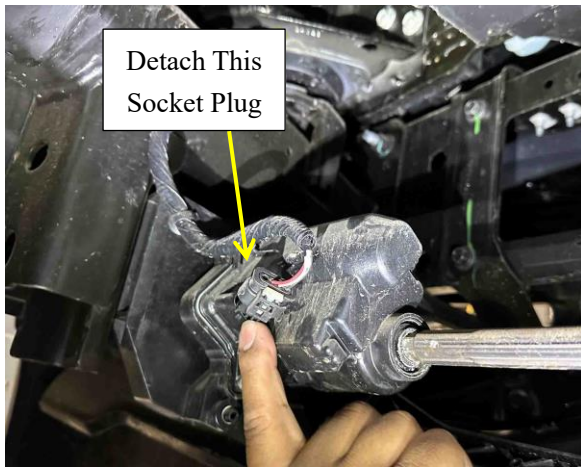


2. Underneath the vehicle where the Chassis Rail Ends are that secure the bumper, remove the 3 Factory Flange Nuts there as shown. Do this for both sides.

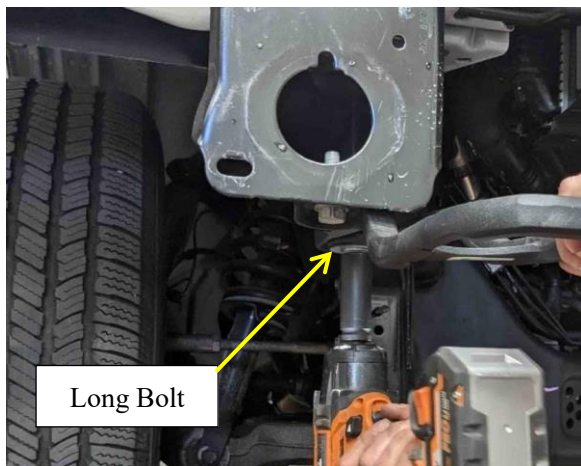


Supreme X-Series Front Bar – RAM 1500 DT (2021+)

3. Disconnect the Harness Plug of the Active Air Dam Module as shown, this will not be needed. Secure it to the chassis with cable ties. Then unscrew factory flange nuts and remove the active air dam actuator.



4. Remove the Factory Tow Hooks by removing the long bolts that secure the chassis to the body of the vehicle. (Older models won't have a Tow Hook, just remove the long bolts). Keep the Long Bolts (including the rubber bushes which come with the newer RAM models).



5. Remove the Factory Front Bumper.



FITTING THE WINCH CRADLE

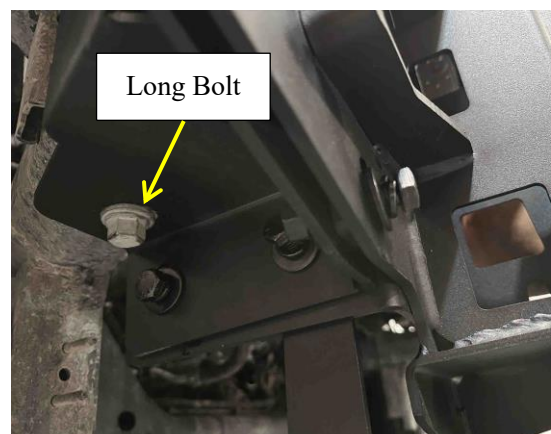
6. Setup the bolts like shown below.

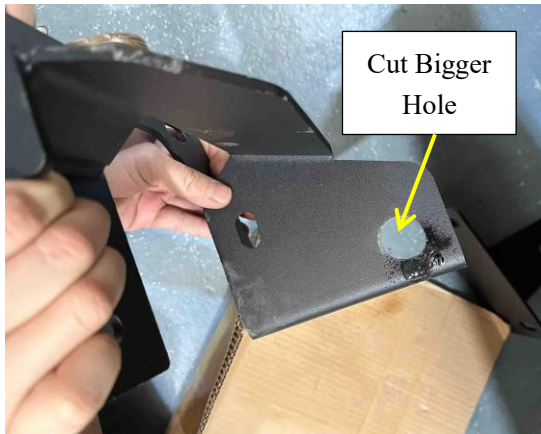


7. Put the Recovery Bracket Pieces on each side of the Chassis Rail Ends like shown below (Including Side Wing Cover Bracket) securing with the bolt setup from above, don't completely tighten yet.

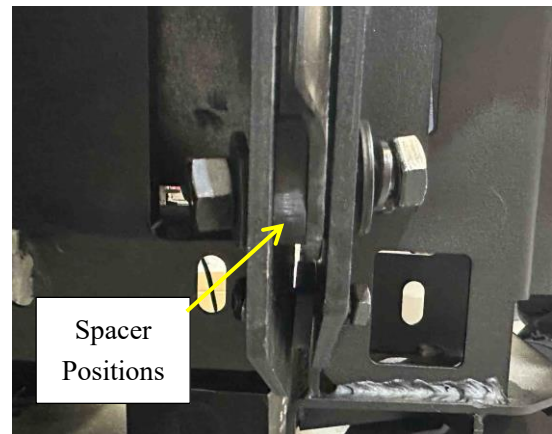
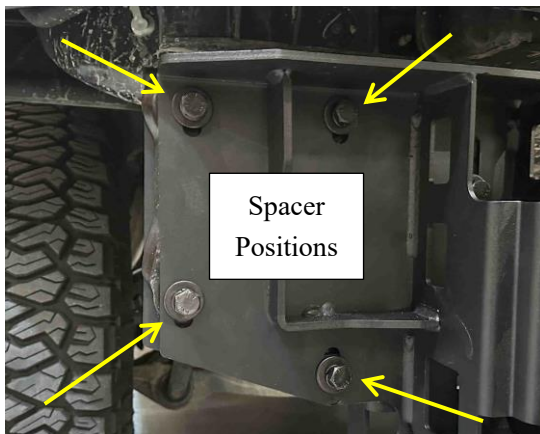


8. Fit the Cradle Bracket Piece onto the Recovery Brackets as shown below with the Bolts and Nut. Fit the Long Bolt (That was removed from step 4 back in securing the bracket) If the Long Bolt does not match the hole of the bracket, then cut a bigger hole to make it fit (use anti-rust on the hole that is cut). Refer to Step 9 Before beginning Step 8.





9. Use the 4 Spacers per side in the positions shown between the Chassis Rail Ends and the Bracket. The Spacer should be positioned behind the Rail Ends and the Rear Bracket.

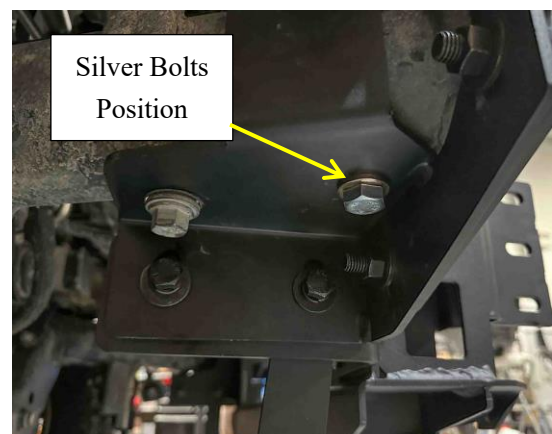


Supreme X-Series Front Bar – RAM 1500 DT (2021+)

10. Once the Cradle Bracket is all setup in position then tighten all the bolts on the Cradle Bracket and Recovery Bracket as shown.

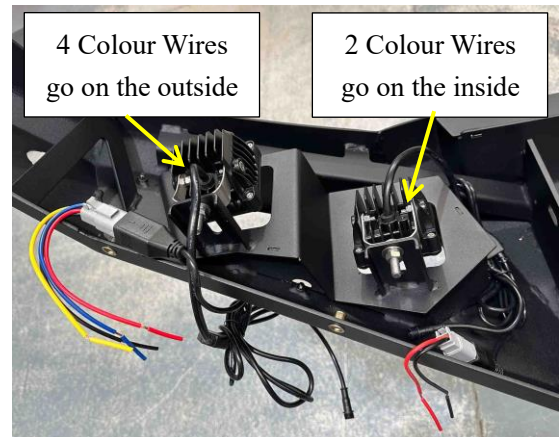


11. The Silver Bolt is used underneath the Chassis Rail Ends like shown.



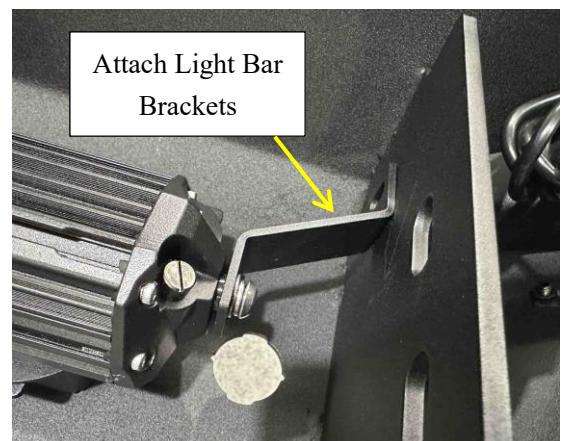
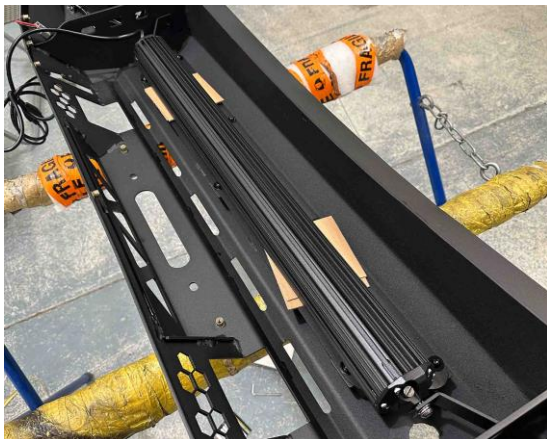
PREPARING THE FRONT BAR

12. Setup the 4x Cube lights like shown below securing them onto the Supreme Front Bar. There are 2 different Cube Lights, ones with 4 coloured wires and 2 coloured. The 4 coloured ones go on the outer side of the Front Bar, while the 2 coloured ones go on the inner side.



NOTE: When tightening the cube lights into position, make sure the light is NOT touching the frame of the bar, and that it is facing forwards as straight as possible and aiming at a slightly down angle.

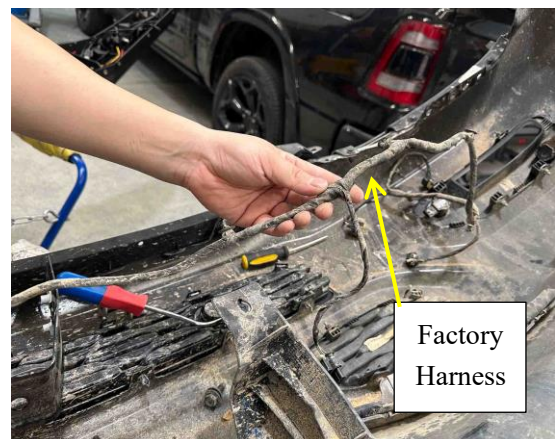
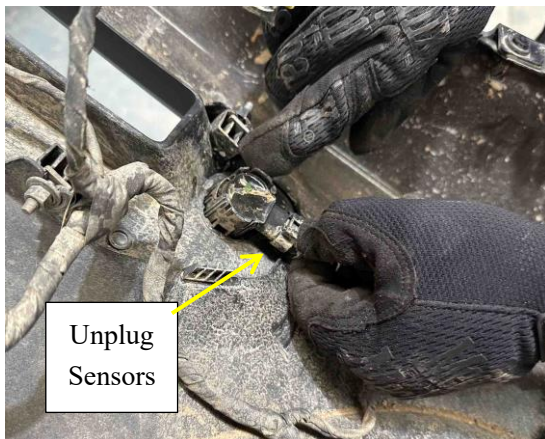
13. Use the square cardboard pieces from the cube light boxes as a support buffer for adjusting the light bar like shown below. Attach the brackets to the sides of the Light Bar.



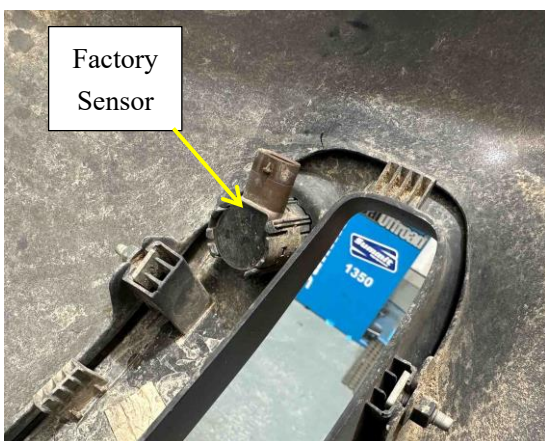
14. Get the Light Bar into position and adjust the angle so that it is aiming slightly upwards. Then tighten the Bracket with the bolts.

Supreme X-Series Front Bar – RAM 1500 DT (2021+)

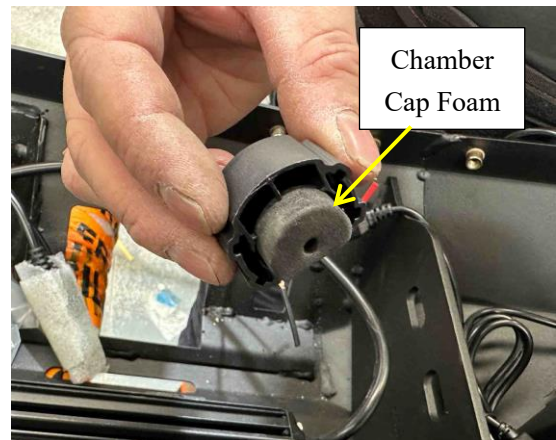
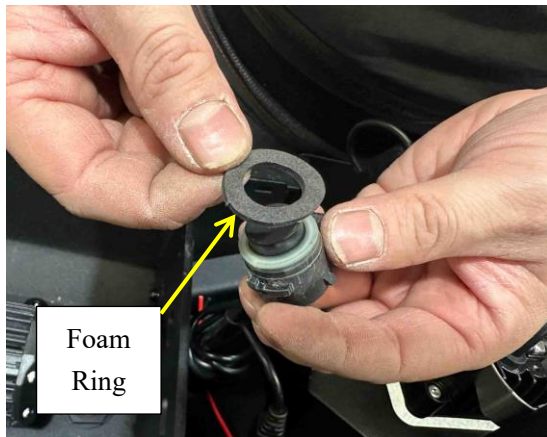
15. On the Factory Front Bumper, first remove the Fog Light Casing. Then Remove the Metal Beam from the Bumper. This will create access to the Factory Sensors which you need to unplug and then remove the Factory Harness by prying off all the clips.



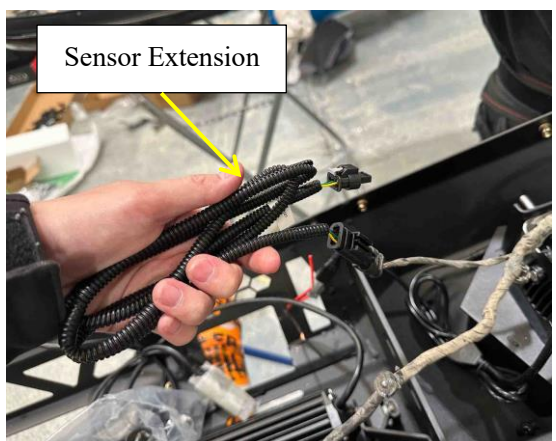
16. Remove the Factory Sensors from the Factory Bumper (IMPORTANT: the positions of the sensors on the factory bumper MUST be relocated to the same corresponding positions on the Supreme Bar). Setup the Sensor Chambers on the Supreme Bar as shown.



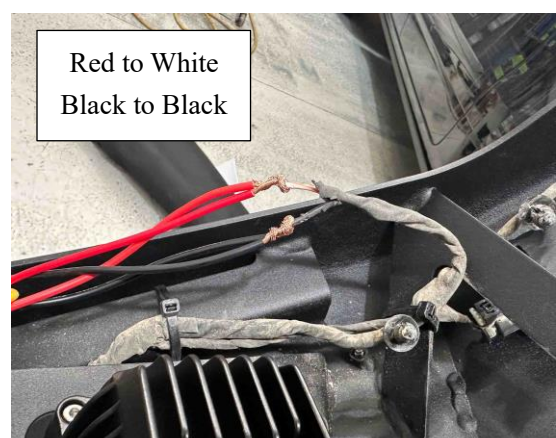
17. Prepare the Sensor by adding the Foam Ring around the front of the Factory Sensor. Put the Foam onto the Sensor Chamber Cap as shown.



18. Fit the Prepared Sensor into the Sensor Chamber on the Front Bar and lock it into position with the Chamber Cap. Reconnect the outer most and inner most Sensors to the Factory Harness, the sensor that is in between will need to use the Sensor Extension to plug the sensor in.



19. Cut off the Factory Fog Light Head Socket to expose the Black and White Wires. Connect the Red Wires from the 2 Cube Lights to the White Wire. Connect the Black Wires from the 2 Cube Lights to the Black Wire. Do this for the Cube Lights on both sides of the Bar.



FITTING ON THE SUPREME FRONT BAR

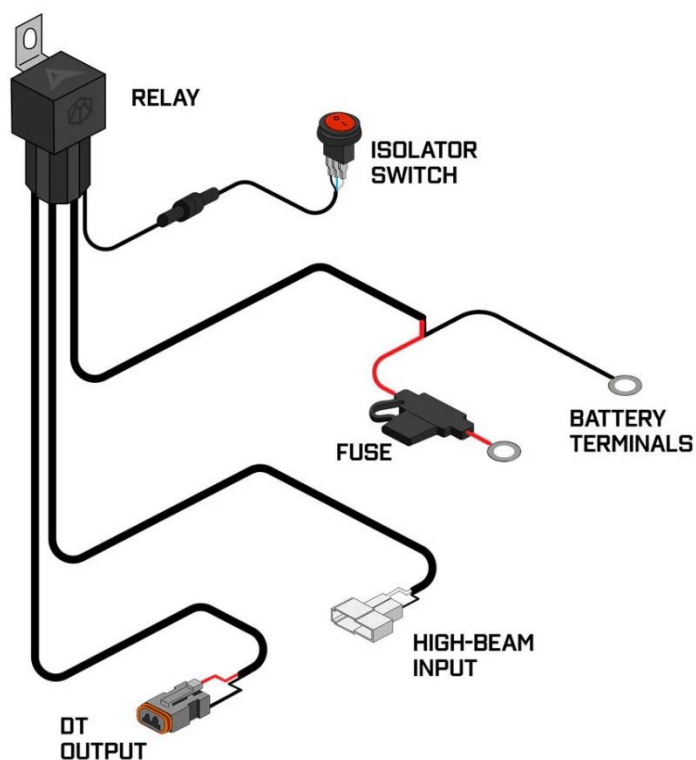
20. Tighten all the Bolts on the Winch Cradle.



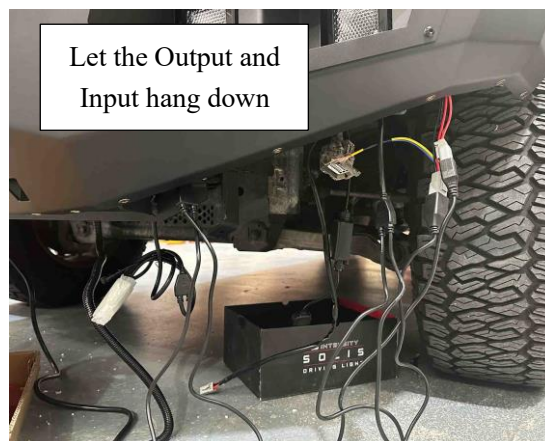
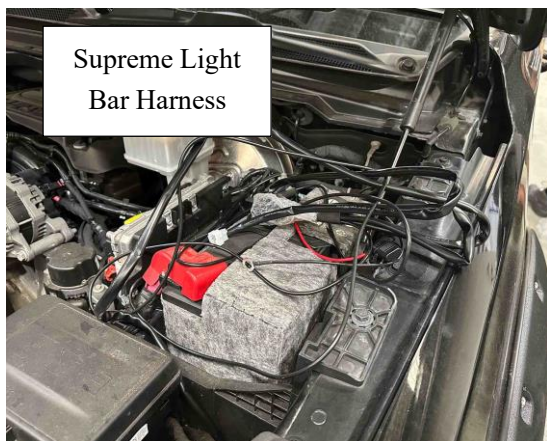
21. Have 2 people on each side supporting the Front Bar as you align it onto the front of the vehicle trying to make it as even and centered as possible. Make sure to leave a gap between 15-20mm. Once aligned secure the bar onto the Winch Cradle with the Brackets and bolts shown.



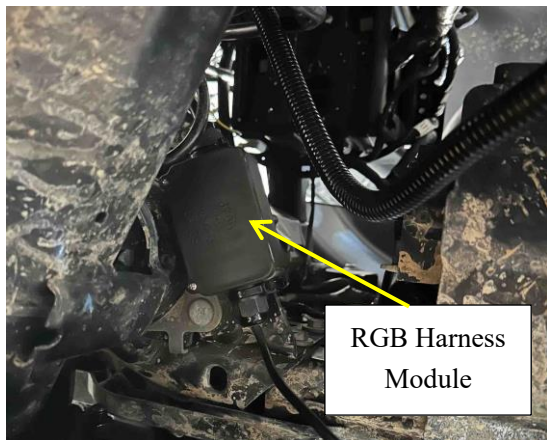
Supreme Light Bar Harness:



22. Place the Supreme Light Bar Harness in the engine by where the battery is and let the Output and Input wires hang down from the Engine Bay past the back of the Front Bar.



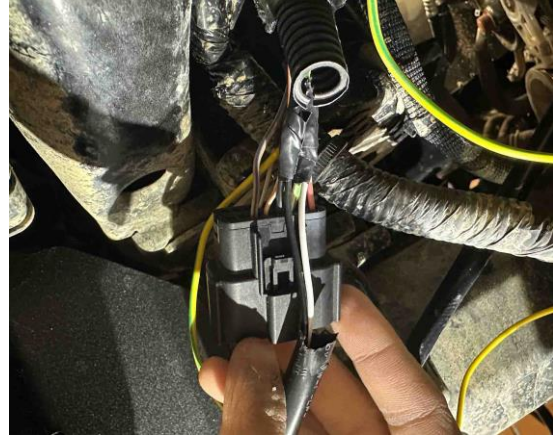
23. Fit and cable tie the RGB Harness Module to the Chassis of vehicle behind the Front Bar. Run the Single Thick Black Wire up to the engine bay next to the Battery then splice it to reveal the Yellow/Green Input Wire.



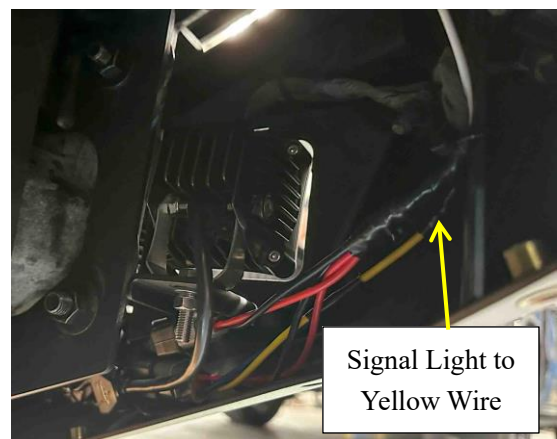
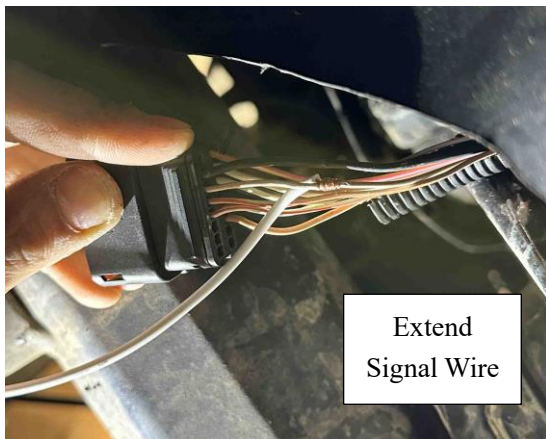
24. Cut the High Beam Harness Input Cable which has the white socket head on it to expose the White and Black Wires.



25. Locate the Factory Headlight Socket on the passenger side as shown below. Connect the Yellow/Green Input Wire from Step 23 to the Factory Headlight Signal Wire. Take the Black and White Wires from Step 24 and Connect the Black Wire to the Negative of the Factory Headlight Socket, And the White Wire to the High Beam Signal of the Factory Headlight Socket.



26. For both the Factory Head Light Sockets, extend the Signal Light Wire so it can reach the Yellow Wire of the Outer Cube Lights and connect them. NOTE: Blue wire does nothing.

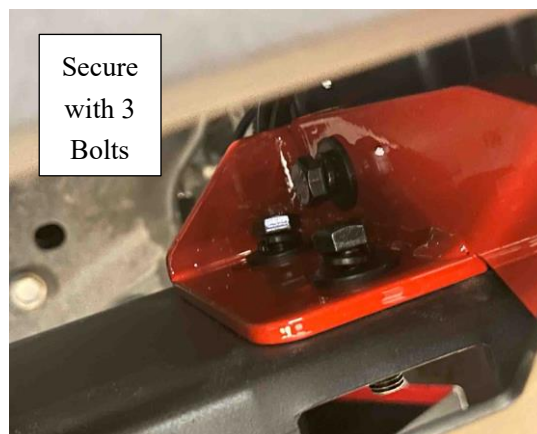
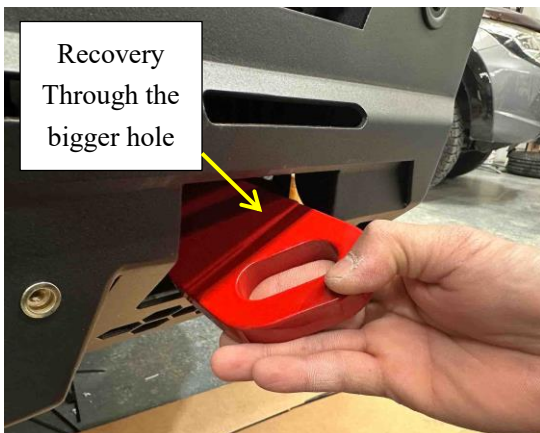


Supreme X-Series Front Bar – RAM 1500 DT (2021+)

27. Connect the Red Battery Wires from the RGB Harness and Light Bar Harness to the Positive Terminal of the Car Battery. Connect the Black Battery Wires from the RGB Harness and Light Bar Harness to the Ground Points in the vehicles engine bay like shown.

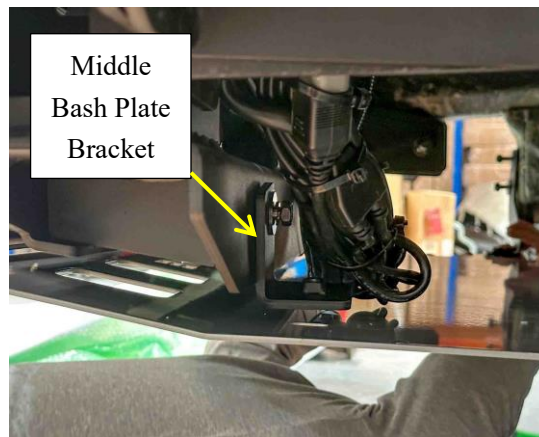
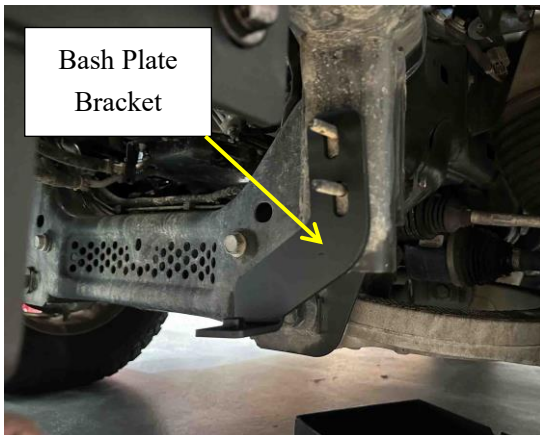


28. Fit the Red Recovery Points to the Bar by firstly inserting them through the larger square hole in the Front Bar, then pull them back through the smaller slit where the recovery will sit. Then secure the Recovery to the Front Bar with the 3 bolts provided as shown. Do this for both the Recovery Points.

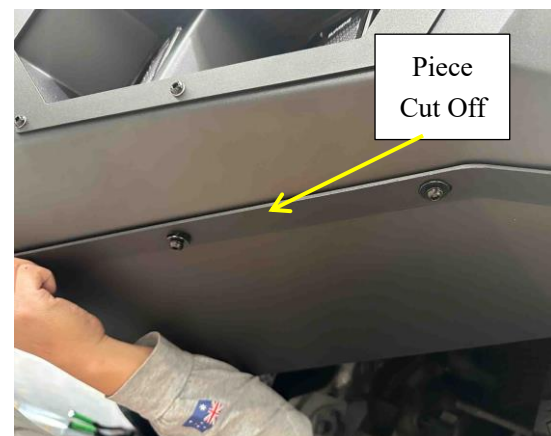


Supreme X-Series Front Bar – RAM 1500 DT (2021+)

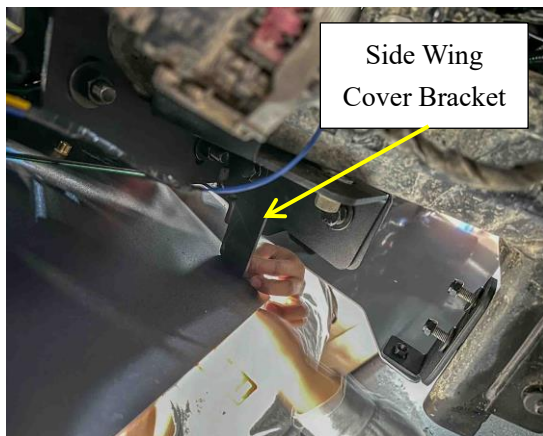
29. Fit the 2 Bash Plate Brackets on both sides under the vehicle like shown using the factory bolts to secure. Then fit the Bash Plate on with the Bash Plate Bracket as a securing point. Then fit another Bash Plate Bracket which goes on the Winch Bracket around the middle of the Bash Plate and secure with bolts.



30. Fit the Side Wing Cover onto each side under the Front Bar. Secure with the bolts provided and attach to the Side Wing Cover Brackets that were installed back in Step 7.



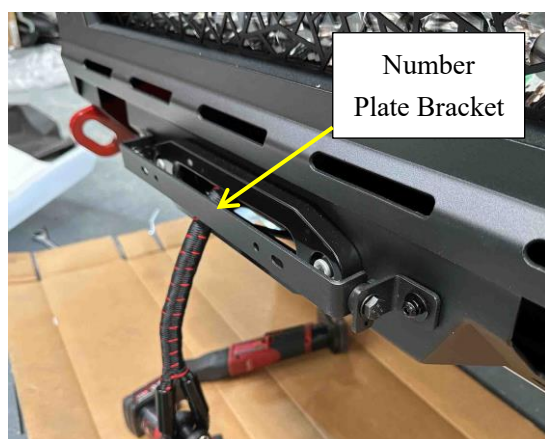
Supreme X-Series Front Bar – RAM 1500 DT (2021+)



31. Run the Isolator Switch from the Light Bar Harness through the engine bay into the driver's side. You will need to cut off the Switch to feed the wire through.



32. Fit the Number Plate Bracket at the front of the Front Bar, tighten the bolts holding the cross bar enough so it is firm but still able to flip up with some force.



Supreme X-Series Front Bar – RAM 1500 DT (2021+)

33. Test all the lights: High Beam, Fog Lights, Indicators, Light Bar
34. Test all the sensors and camera.
35. If any of the Lights, Sensors or Camera are not working, go back through the fitting instructions and make sure you have followed them correctly and that your fitment matches.

INSTALLATION IS NOW COMPLETE

36. Stand back and admire your work of art.

NOTE

Any damage caused by improper installation or not following the fitting instructions will NOT be covered by our product warranty.