



SUPREME ELECTRIC REAR STEP

BYD Shark 6 (2024+)

Suits Factory Rear Bumper

INSTALLATION MANUAL

Supreme Electric Rear Step – BYD Shark 6 (Factory Rear Bumper)

SUPREME ELECTRIC REAR STEP FOR BYD SHARK 6 (2024+)

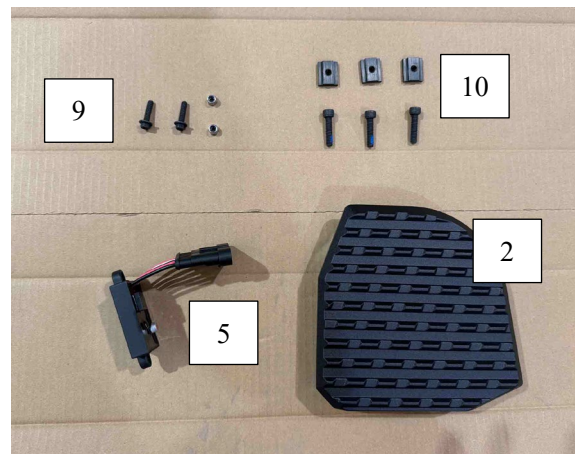
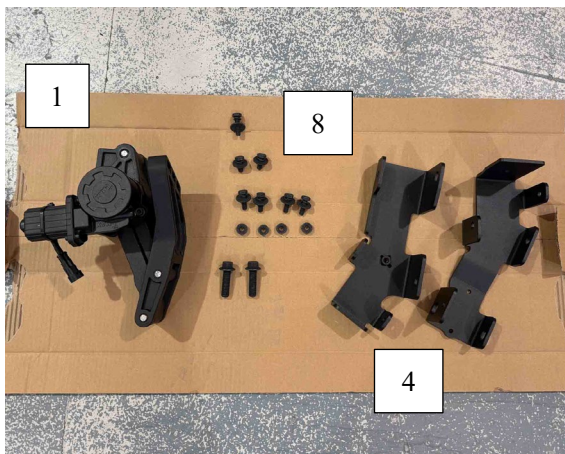
Before Installation

- Please read the instructions completely for easy installation, which will also help you to avoid scratches or other potential damage to your vehicle.
- The figures here are for reference only and may have small differences with the actual product you received.

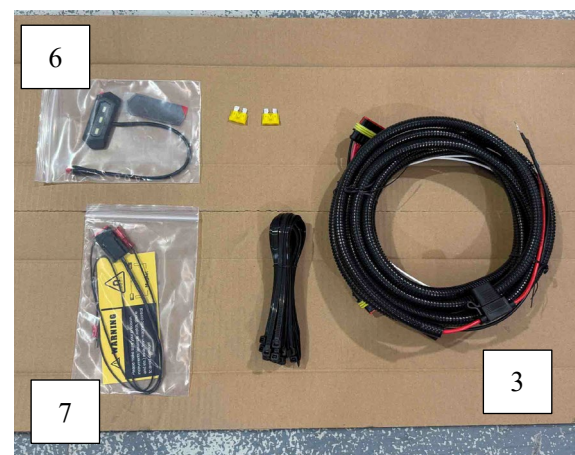
Care and Cleaning

- The product is car wash safe and can be cleaned & washed using regular car washing methods.
- For longevity and functionality, please periodically check and retighten all the hardware and clean any debris build up.

Parts List:



1. Electric Arm (1)
2. Step (1)
3. Harness (1)
4. Brackets (2)
5. Module (1)
6. LED Light (1)
7. Sensor & Magnet (1 each)
8. Bolts (9) & Washers + Spring (7) Nuts (4)
9. M5 Bolts & Nuts (2 each)
10. Step Bolts & Nuts (3 each)

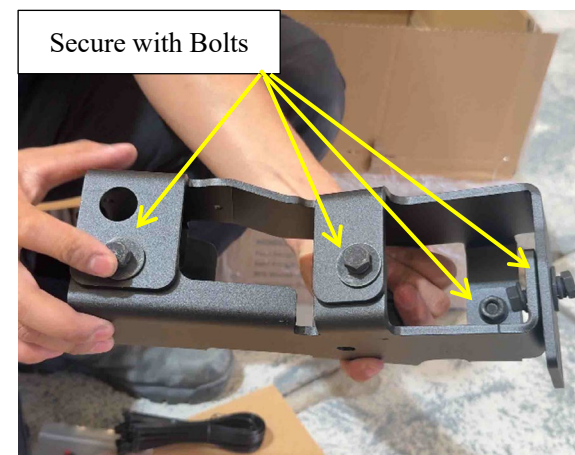
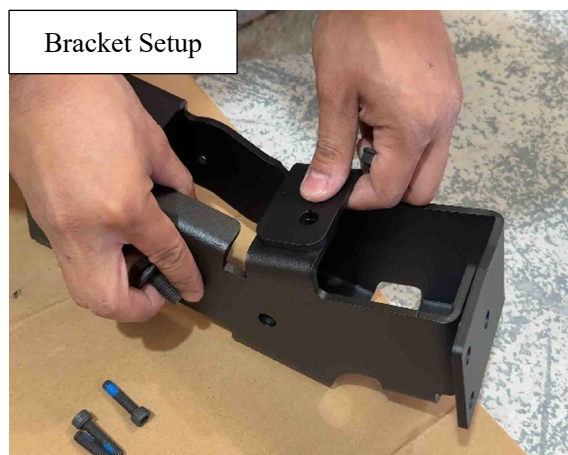


Supreme Electric Rear Step – BYD Shark 6 (Factory Rear Bumper)

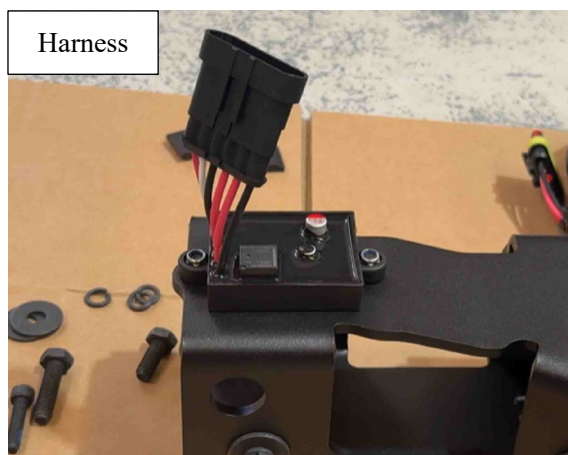
FIRSTLY: Verify that all parts are present before you begin.

NOTE: Any factory clips or screws you remove need to be kept as it may be used in later steps.

1. Use the 4 Bolts circled, assemble using Bolt, spring washer, washer and nut. Assemble the Brackets together like shown, then secure with the bolts from above in the positions shown.



2. Attach the Harness onto the Electric Arm using the bolts provided together as shown below.



Supreme Electric Rear Step – BYD Shark 6 (Factory Rear Bumper)

3. Unclip these points as shown under the passenger side rear of the vehicle where the step will be installed.

Clip 1 remove

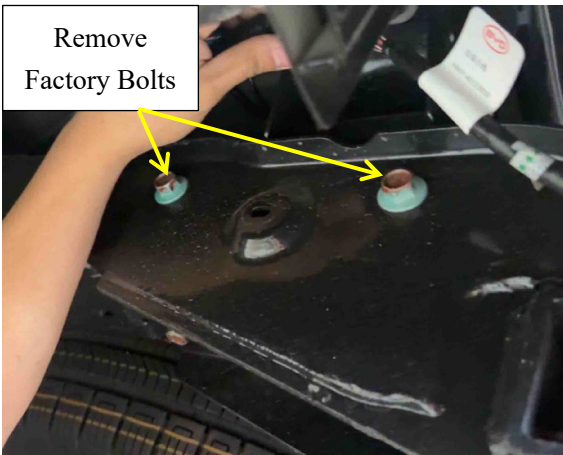


Clip 2 remove



4. This will expose these 2 factory bolts that will require removal.

Remove
Factory Bolts



5. Attach the Bracket from Step (1) and (2) onto the vehicle securing with the Big Bolts shown below, they will go where the 2 factory bolts were removed in the previous step.

Use these
Big Bolts



Attach
Bracket



Supreme Electric Rear Step – BYD Shark 6 (Factory Rear Bumper)

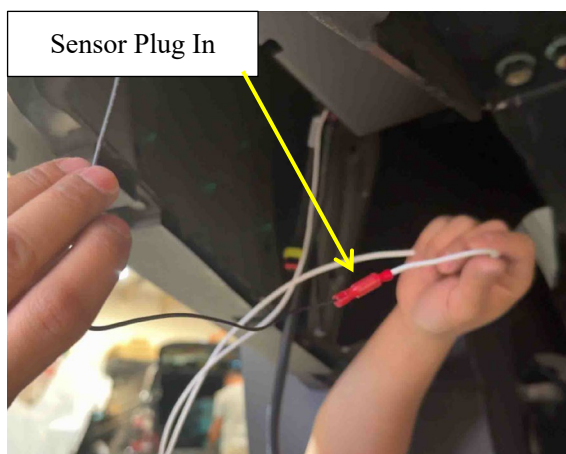
6. Stick the Sensor onto the opened tailgate area above the Bracket in the position shown.



7. Take the Harness Plug that is shown below and plug it into the Module.



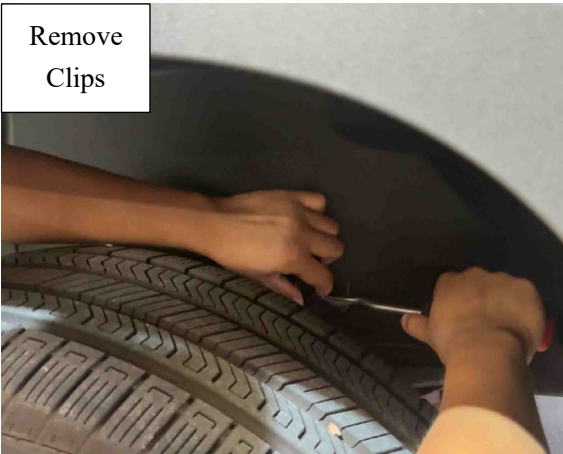
8. Run the Black wire with the red tip from the Sensor fitted in Step (12) down to the Module and plug it into the White Wire with the Red tip.



Supreme Electric Rear Step – BYD Shark 6 (Factory Rear Bumper)

9. Remove the 3 clips from the Wheel arch next to the Step being fitted (Keep Clips).

Remove
Clips



10. Run the Harness through behind the wheel arch and under the vehicle, put clips back onto wheel arch once that is done.

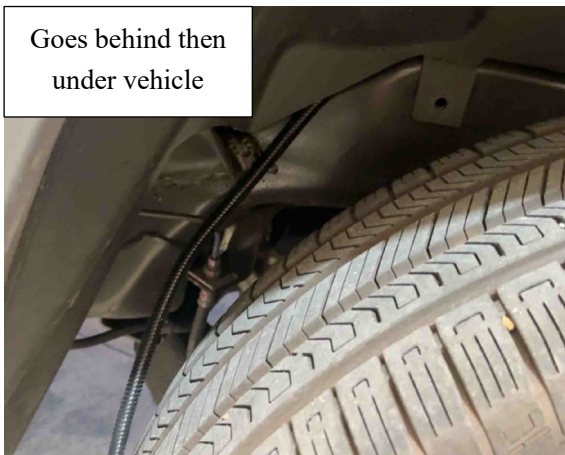
Harness



Behind Wheel
Arch



Goes behind then
under vehicle



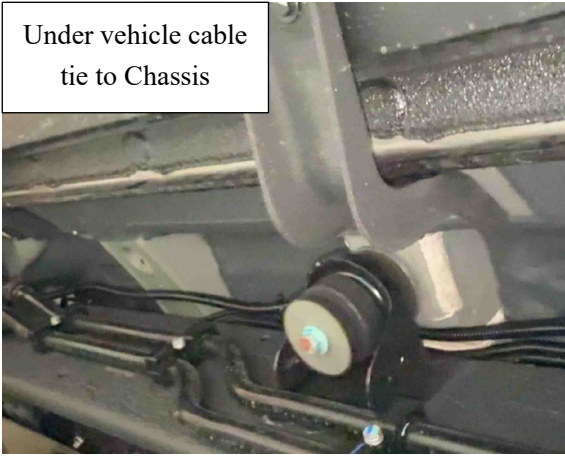
Clips back on



Supreme Electric Rear Step – BYD Shark 6 (Factory Rear Bumper)

11. Run the harness under the vehicle neatly and cable tie to the Chassis, run up through the Front Wheel Arch and into the engine bay.

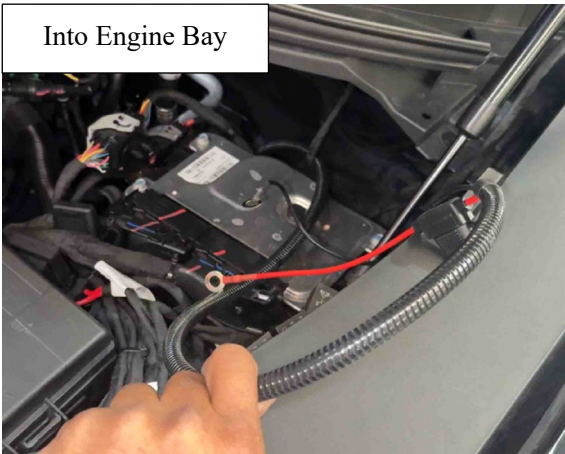
Under vehicle cable
tie to Chassis



Through Front
Wheel Arch

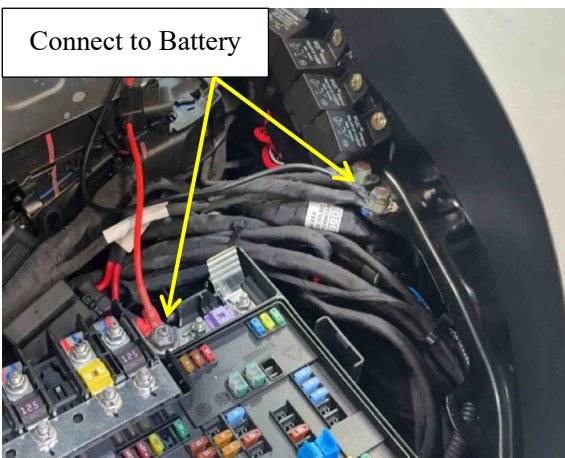


Into Engine Bay



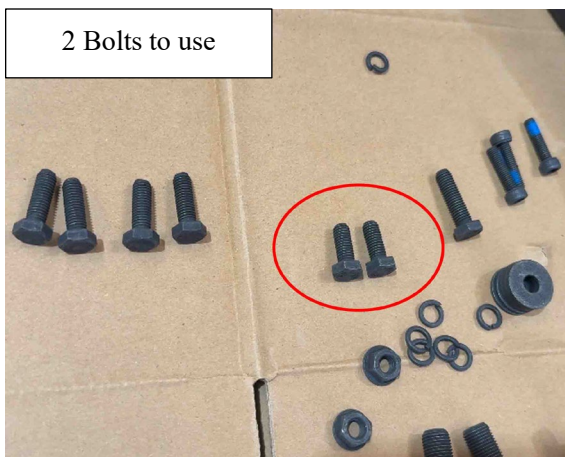
12. Attach the Red positive and Black negative to the battery as shown.

Connect to Battery

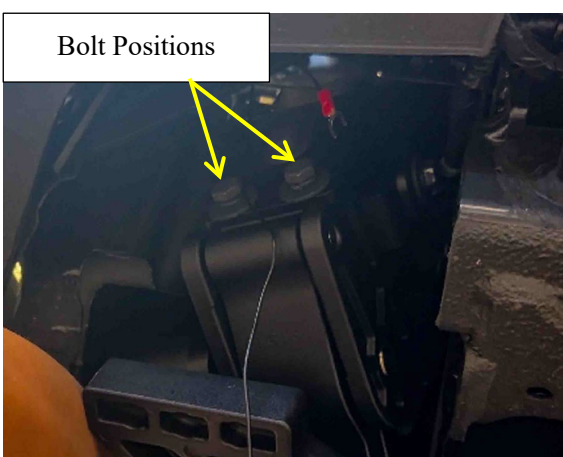


Supreme Electric Rear Step – BYD Shark 6 (Factory Rear Bumper)

13. Use the 2 small bolts shown and assemble with spring washer and washer.



14. Fit the Arm onto the bracket under the vehicle using the bolt setup from above.



Supreme Electric Rear Step – BYD Shark 6 (Factory Rear Bumper)

15. Use the small magnet and place it near the sensor to activate the step to deploy. This will expose the last bolt position.

Magnet to activate

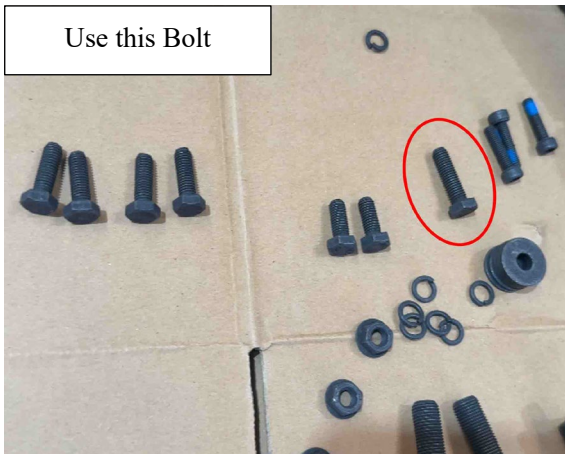


Deploys Step



16. Use this bolt shown with a spring washer and washer to secure the last position for the Arm to the Bracket.

Use this Bolt



Washers on



Last Bolt position



Supreme Electric Rear Step – BYD Shark 6 (Factory Rear Bumper)

17. Clean the surface of the rear bumper above the step and stick the LED light on. Plug in the light to the module as shown, then bundle and cable tie all loose wires together and secure to the vehicle.

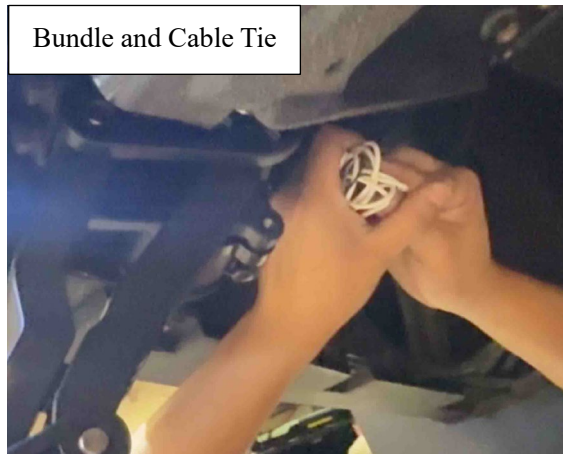
Stick LED Light



Plug Light to Module

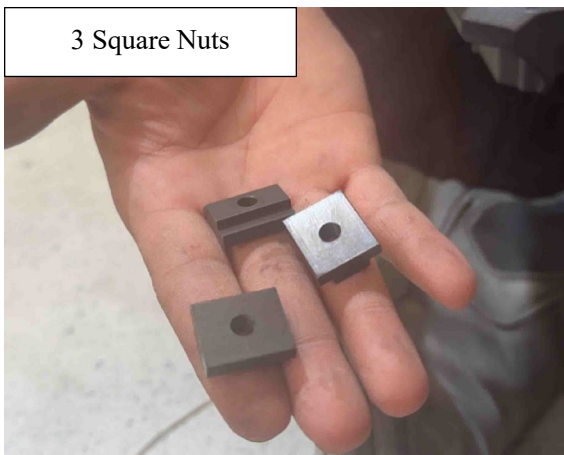


Bundle and Cable Tie

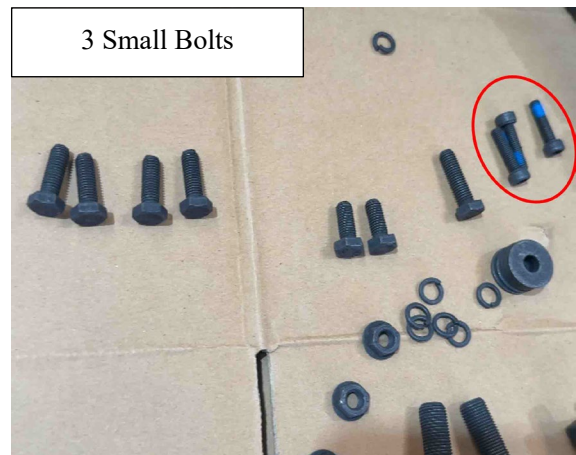


18. Take the 3 square nuts and the 3 small bolts shown.

3 Square Nuts



3 Small Bolts

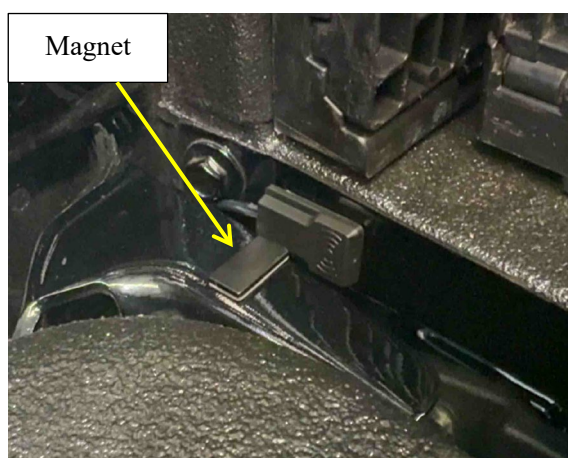


Supreme Electric Rear Step – BYD Shark 6 (Factory Rear Bumper)

19. Insert the nuts into the Step and put the Step onto the Arm, secure with the 3 bolts underneath.



20. Stick the Magnet onto the tailgate to match the sensor position as shown.



Supreme Electric Rear Step – BYD Shark 6 (Factory Rear Bumper)

21. That completes the installation of the Electric Rear Step



Make sure all bolts are tight, all cables and wiring are neatly bundled and tied.

Test that the LED light is working, and the Step deploys when the tailgate opens and retracts when the tailgate is closed.

If any of these are not functioning properly, refer to the steps in the instructions associated with these areas and double check all steps are performed correctly.

And that concludes the whole installation of the Supreme Electric Rear Step for the BYD Shark 6 (2024+) with the Factory Rear Bumper

Take a step back, give yourself a pat on the back and admire your work of art.

NOTE

Any damage caused by improper installation and/or application of this product will void our product quality warranty.